

SELF ASSESSMENT MODEL PAPER-4 [/FA-4]

English Practice paper

Class : IX

(Max Marks :35)

Duration: 1:15min

SECTION-A (Reading Comprehension)

Reading Comprehension (11 x1 = 11 marks)

A) Read the following passage

The only woman in the world who has scaled Mt Everest twice was born in a society where the birth of a son was regarded as a blessing, and a daughter, though not considered a curse, was not generally welcome. When her mother was expecting Santosh, a travelling 'holy man', giving her his blessing, assumed that she wanted a son.

(Reach for the Top-Santosh Yadav)

Now answer the following questions:

1. What is unique about the woman mentioned in the passage?

2. How was the birth of a son viewed in the society where Santosh was born?

3. What assumption did the holy man make when giving Santosh's mother his blessing? ()

- a) That she wanted a daughter
- b) That she wanted a son
- c) That she did not want any children

B) Read the following passage

Kathmandu is vivid, mercenary, religious, with small shrines to flower-adorned deities along the narrowest and busiest streets; with fruit sellers, flute sellers, hawkers of postcards; shops selling Western cosmetics, film rolls and chocolate; or copper utensils and Nepalese antiques. Film songs blare out from the radios, car horns sound, bicycle bells ring, stray cows low questioningly at motorcycles, vendors shout their wares.

(Kathmandu)

Now answer the following questions:

4. How is Kathmandu described in the passage?

5. What can be found along the busiest streets of Kathmandu?

6. What types of items are sold in the shops mentioned in the passage? ()

- a) Only traditional Nepalese items
- b) Only Western items
- c) Both Western and Nepalese items

C) Read the following poem and answer the questions given.

*It takes much time to kill a tree,
Not a simple jab of the knife
Will do it. It has grown
Slowly consuming the earth,
Rising out of it, feeding
Upon its crust, absorbing
Years of sunlight, air, water,*

*And out of its leprous hide
Sprouting leaves.
So hack and chop
But this alone won't do it.
Not so much pain will do it.
The bleeding bark will heal*

7. What does the poet say about the time it takes to kill a tree?

8. How has the tree grown, according to the poem?

9. What happens to the tree's bark when it is hacked and chopped?

()

- a) It becomes stronger
- b) It heals and grows back
- c) It turns into a new tree

D) Read the following passage and answer the questions.

ON 27 October 1999, seven years after his mother's death, Prashant had gone to the block headquarters of Ersama, a small town in coastal Orissa, some eighteen kilometres from his village,

(Weathering Storm in Ersama (SR))

10. When did Prashant go to Ersama?

- a) 27 October 1992
- b) 27 October 1999
- c) 27 October 2000

11. How long had it been since Prashant's mother's death when he visited Ersama?

- a) Five years
- b) Ten years
- c) Seven years

SECTION-B (Grammar & Vocabulary)

Grammar & Vocabulary (14 marks)

1) Pick out words from the given box that mean the same as the following expressions.

[4x1/2=2]

Endurance	Urge	Assumed	rational
-----------	------	---------	----------

- a) took to be true without proof = _____
- b) based on reason; sensible; reasonable = _____
- c) a strong desire arising from within = _____
- d) the power to endure, without falling ill = _____

2) Change the following into Passive Voice.

[1]

Maria Sharapova plays Tennis.

3) Change the following into Reported Speech.

[1]

The author said, "The flutes are a part of every culture."

4) Fill in the blanks with the correct form of the verb in brackets. [4x1/2=2]

The heart is a pump that _____ (a) (send) the blood circulating through our body. The pumping action _____ (b) (take) place when the left ventricle of the heart (contract). This _____ (c) (force) the blood out into the arteries, which _____ (d) (expand) to receive the oncoming blood.

- a)
- b)
- c)
- d)

5) Write the Opposites (/Antonyms) for the underlined words.

[4x1/2=2]

During the 1992 Everest mission, Santosh Yadav provided special(a) care to a climber who lay dying(b) at the South Col. She(c) was unfortunately(d) unsuccessful in saving him.

- a)
- b)
- c)
- d)

6) Fill in the blanks with the right form of the words given in the brackets. [4x1/2=2]
 At the Baudhnath stupa, the Buddhist shrine of Kathmandu, there is, in contrast, a(a) (senses, sensing, sense) of(b) (still, stillness, stilling). Its(c) (immensely, immensity, immense)(d) (whiteness, whitening, white) dome is ringed by a road.

7) Identify the wrongly felt words and rewrite them correctly. [1/2]
 mountin woman temple previous

8) Fill in the blank with a suitable preposition. [1/2]
 Maria Sharapova could speak _____ an American accent. (about/with/on)

9) Complete the words with the correct prefix and suffix given in the brackets. [2x1/2=1]
 a) Hard work and dedica_____ (sion/tion) are the keys to success.
 b) My school bag is _____ placed. (mis/dis)

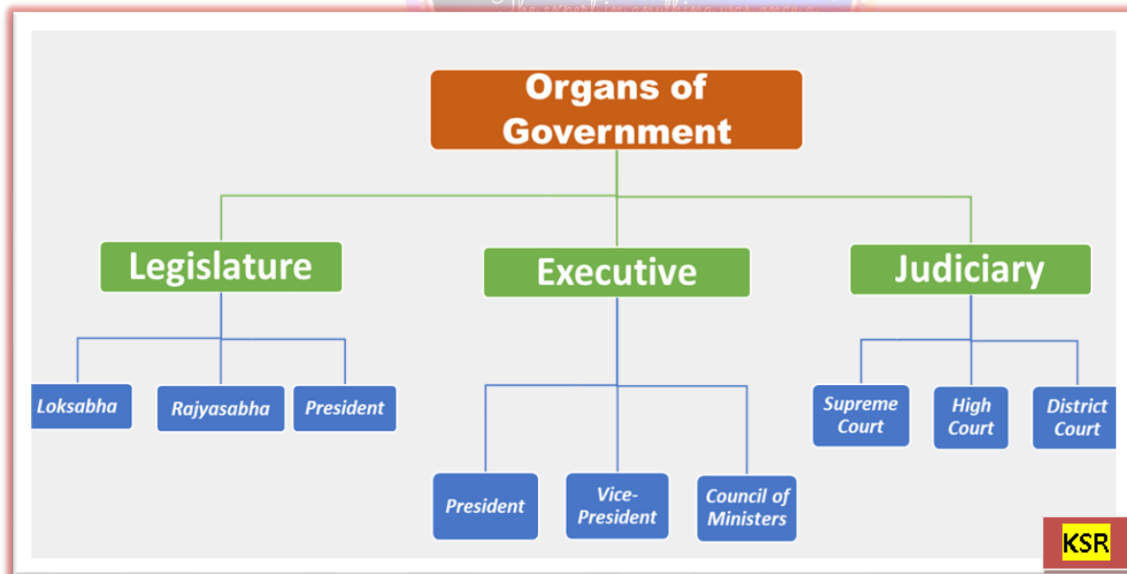
10) Match column 'A' with column 'B' [4x1/2=2]

A		B
1. Break out	[]	a. End a relationship
2. Break off	[]	b. Stop working
3. Break down	[]	c. Start suddenly,(usually a fight, a war or a disease)
4. Break up	[]	d. To come apart due to force

SECTION-C (Creative Writing)

Creative Writing (1x10=10 marks)

1) Study the following Tree diagram and describe the diagram in a few paragraphs.



(Or)

Write a letter to your friend explaining the importance of speaking English or communicating in English.

For the Syllabus and more Papers Refer to